

Packaging Types - Description

Description	Code
RH = Removable Head	
NRH = Non Removable Head	
GPRS = Glass, Porcelain, Receptacle, Stoneware	
Aluminium boxes	4B
Aluminium drums, NRH	1B1
Aluminium drums, RH	1B2
Aluminium jerricans, NRH	3B1
Aluminium jerricans, RH	3B2
Boxes of natural wood	4C2
Boxes of natural wood, ordinary	4C1
Expanded plastic boxes	4H1
Fibre drums	1G
Fibreboard boxes	4G
Flexible paper	51M
Flexible plastics	51H
GPSR in aluminium crate or box	6PB2
GPSR in aluminium drum	6PB1
GPSR in expanded plastics packaging	6PH1
GPSR in fibre drum	6PG1
GPSR in fibreboard box	6PG2
GPSR in plywood drum	6PD1
GPSR in solid plastics packaging	6PH2
GPSR in steel crate or box	6PA2
GPSR in steel drum	6PA1
GPSR in wickerwork hamper	6PD2
GPSR in wooden box	6PC
IBC - Flexible Plastics film	13H5
IBC - Fibreboard for solids	11G
IBC - Flexible Textile	13L1, ..., 13L4
IBC - Flexible woven plastics	13H1, ..., 13H
IBC - Natural wood for solids	11C
IBC - Plywood for solids	11D
IBC - Aluminium for liquids	31B
IBC - Aluminium for solids	11B
IBC - Aluminium for solids	21B
IBC - Flexible Paper	13M1, 13M2
IBC - for liquids	31HZ1, 31HZ
IBC - for solids	11HZ1, 11HZ
IBC - for solids	21HZ1, 21HZ
IBC - NOT steel or aluminium, for liquids	31N
IBC - NOT steel or aluminium, for solids	11N
IBC - NOT steel or aluminium, for solids	21N
IBC - Reconstituted wood for solids	11F
IBC - Rigid plastics for liquids	31H1, 31H2
IBC - Rigid plastics for solids	11H1, 11H2
IBC - Rigid plastics for solids	21H1, 21H2
IBC - Steel for liquids	31A
IBC - Steel for solids	11A
IBC - Steel for solids	21A
Metal boxes, NOT steel or aluminium	4N
Metal drums (NOT steel or aluminium), NRH	1N1
Metal drums (NOT steel or aluminium), RH	1N2
Paper bags	5M1, 5M2
Plastic drums, NRH	1H1
Plastic drums, RH	1H2
Plastic film bags	5H4
Plastic jerricans, NRH	3H1
Plastic jerricans, RH	3H2
Plastic receptacle in aluminium crate or box	6HB2
Plastic receptacle in aluminium drum	6HB1
Plastic receptacle in fibre drum	6HG1
Plastic receptacle in fibreboard box	6HG2
Plastic receptacle in plastics drum	6HH1
Plastic receptacle in plywood box	6HD2
Plastic receptacle in plywood drum	6HD1
Plastic receptacle in solid plastics box	6HH2
Plastic receptacle in steel crate or box	6HA2
Plastic receptacle in steel drum	6HA1
Plastic receptacle in wooden box	6HC
Plywood boxes	4D
Plywood drums	1D
Portable Tank	T1, ..., T23, T50, T75
Reconstituted wood boxes	4F
Rigid fibreboard	50G
Rigid large packaging - Aluminium	50B
Rigid large packaging - Metal (NOT steel or aluminium)	50N
Rigid large packaging - Natural wood	50C
Rigid large packaging - Plywood	50D
Rigid large packaging - Reconstituted wood	50F
Rigid large packaging - Steel	50A
Rigid plastics	50H
Solid plastic boxes	4H2
Steel boxes	4A
Steel drums, NRH	1A1
Steel drums, RH	1A2
Steel jerricans, NRH	3A1
Steel jerricans, RH	3A2
Textile bags	5L1, 5L2, 5L3
Woven plastic bags	5H1, 5H2, 5H3

7-Step Driver Checklist for DG pickup

DG Certificate Checklist

- Expiry Date of Certificate > Today.
- Certificate issued by Current Employer.
- Contractor may use their Company issued Certificate provided Driving on a Contract.

Declaration Checklist

Use to validate Declaration Document.

- 1 Consignor & Consignee info clearly indicated.
- 2 Declaration syntax is in exact format (Table 1).
- 3 Class 1 Cargo, validate segregation use DRY BOX equipment (Table 2).

UN NO.	PROPER SHIPPING NAME	CLASS (SUBSIDIARY RISK)	PACKING GROUP	QUANTITY AND TYPE OF PACKING	ERAP
UN1373	FABRICS, ANIMAL	4.2	III	10 Steel drums, non-removable head X 200 kg	XXXX
UN1394	ALUMINIUM CARBIDE	4.3	II	20 Steel drums, non-removable head X 200 kg	1234
UN1163	DIMETHYLHYDRAZINE, UNSYMMETRICAL Marine Pollutant Toxic by inhalation	6.1 (3.8, LH)	I	10 Steel drums, non-removable head containing 10 Drums X10 L	5678

Table 1

Compatibility Groups	Transported with these compatibility Groups																		
	A	B	C	D	E	F	G	H	J	K	L	N	S						
A																			
B																			
C																			
D																			
E																			
F																			
G																			
H																			
J																			
K																			
L																			
N																			
S																			

Table 2

- 4 Shipper Declaration and Signature (Table 3).
- 5 Emergency contact number must be listed.

SHIPPER'S DECLARATION:
I hereby declare that the contents of this consignment are fully and accurately described above by the Proper Shipping Name and are classified packaged, marked and labelled/placarded, and are in all respects in proper condition for transport according to applicable international and national Government Regulations.

Name of the Shipper: Sridevi Thomas
Place and Date: Dartmouth, NS 06/08/2016
Signature of the Shipper: Sridevi Thomas

Table 3

Package Labels / Markings Checklist

- 1 UN number, Proper Shipping Name.
- 2 Approved UN certified Packaging (Figure 1, 2).
- 3 Packaging Condition - No visible sign of Corrosion, Outer Packaging must not be damaged, Orientation is correct.
- 4 Primary and Secondary Class Labels (All Primary and Secondary Class Labels must be on the Package) (Figure 3).
- 5 On a standard skid where the height of the goods is less than 1.4 Meters or 5 feet, then atleast One Overpack Label else two Labels. Overpack label contain UN number, PSN, "Overpack", Class Labels. Use ruler to verify point to point height of Class Label Draw a line to the ruler (Figure 4).

Code	Packing Groups
X	I, II & III
Y	II & III
Z	III

Figure 1

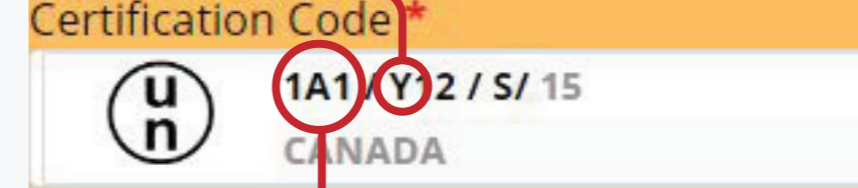


Figure 2

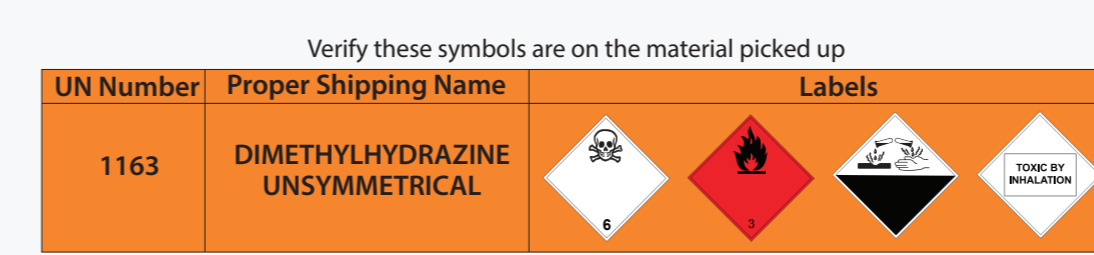


Figure 3



Figure 4

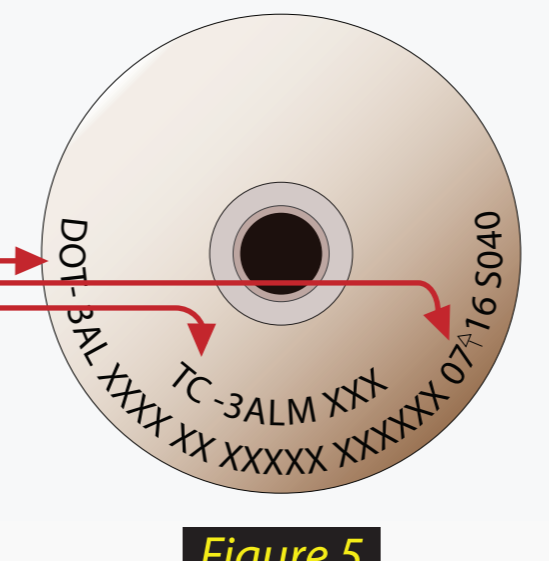


Figure 5

Tank & Tube Markings

- 1 It is illegal to transport tanks and tubes without a TC or DOT mark. Inspection date must be valid (Figure 5).

Placarding Checklist

- Use to validate right Placarding.
- Placards need to be displayed on four sides of the truck (Figure 6).
- Placards must be displayed until DG is removed from the vehicle.
- Shipper responsible to provide Placards for pickup load. Driver responsible for placards for consolidated load.
- For Consolidator, Web software helps calculating right placarding required for any given (Consolidated) DG load.
- Shipper use to create Compliant Declarations.

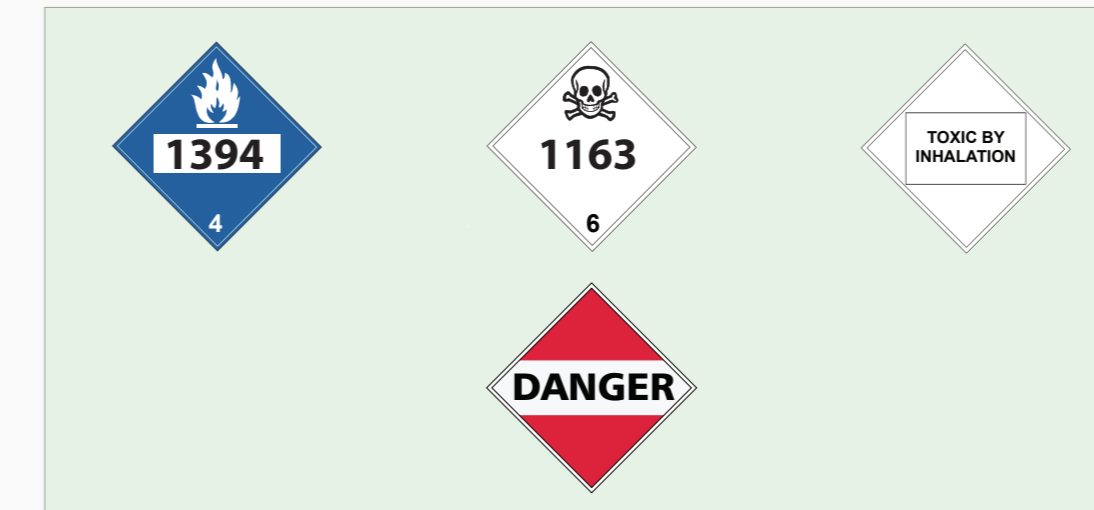
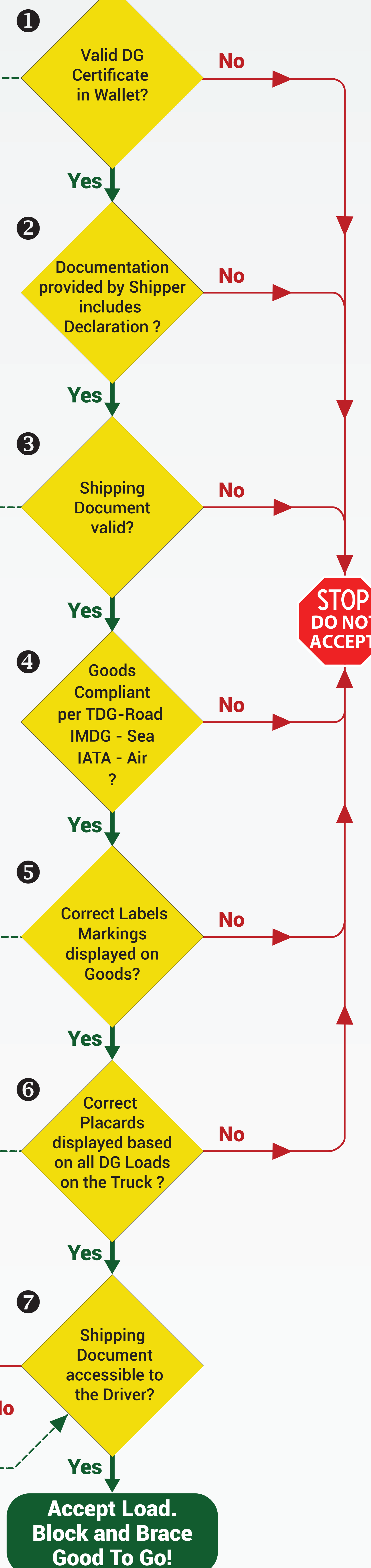


Figure 6

Declaration document placement checklist

- Place Document in door or within reach in power unit.
 - When leaving power unit, place on driver's seat.
 - ERG should also be accessible. Also available on .
- Note: Driver responsible until document is transferred to another individual.

START



Overpack class label peak to peak